



Rollerdor

THE ROLLER GARAGE DOOR SPECIALISTS

Standard Installation of RDEOZF External Override

Edition 2024/1



1. INSTALLATION

WHAT YOU WILL NEED:

- Masonry drill with 20mm and 6.5mm masonry drill bits
- 6.5mm wall plugs and screws to suit
- Security screws to fit 6.5mm wall plugs (recommended)
- Cordless drill with 5mm metal drill bit
- Hacksaw or angle grinder with metal cutting blade

- 1** Mark the spot where you would like the override to be installed, this must be within 100mm of the guide runner and needs to be approximately 1 meter up from the ground. It's best to drill the hole on the cement line between the bricks (**fig.1.1**). The hole will need to be 20mm all the way through.
- 2** Place the key barrel and tube (**fig.2.2**) into the hole so that you can mark the fixing holes through the mounting plate (**fig.2.1**). Drill the holes but **DO NOT** fix the plate to the wall.
- 3** Insert the longest hexagonal bar into the cylindrical adaptor (**fig.3.1**), then push the adaptor into the end of the plastic tube (**fig.3.2**).
- 4** Push the metal bar and plastic tube into the hole in the wall (**fig.4.1**) then fix the mounting plate using the holes previously drilled (**fig.4.2**).
- 5** Fit the metal bracket to the plastic knuckle with the screws supplied (**fig.5.1**).

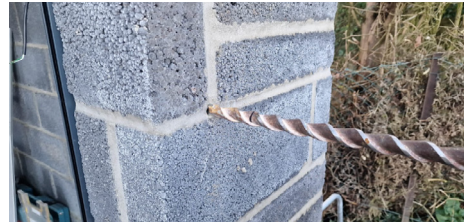


fig.1.1



fig.2.1



fig.2.2



fig.3.1



fig.3.2



fig.4.1

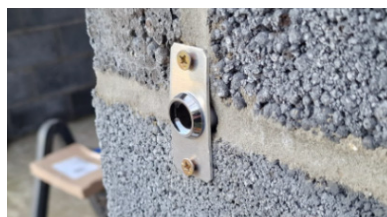


fig.4.2



fig.5.1

- 6** On the inside of the garage, mark the metal bar approx 40mm from where it exits the wall (**fig.7.1**) and using a hacksaw or grinder cut the bar to this length.
- 7** Place the plastic knuckle with metal plate (**fig.5.1**) over the remaining metal stem and mark the 4 fixing holes for the bracket. Drill the holes (**fig.7.1**) then fix the plastic knuckle with metal bracket to the wall as in **fig.10.2**.
- 8** Using the items in **fig.8.1** insert the hexagonal bar with the hole through it into the universal joint so the hole lines up (**fig.8.2**), then attach to the universal joint using the screw provided.
- 9** Push the hex bar through the header plate edge and motor (**fig.9.1**) then attach the small 'C' Clip as seen in **fig.8.1** in the slot provided to stop the bar from being able to drop back down.
- 10** Slide the plastic tube over the long handle (**fig.10.1**) then push the base of the handle at the bottom of the long tube into the top of the plastic knuckle (**fig.10.2**). Once in place, let the plastic tube slide down the handle so that it rests on top of the black plastic knuckle (**fig.10.3**).



fig.7.1

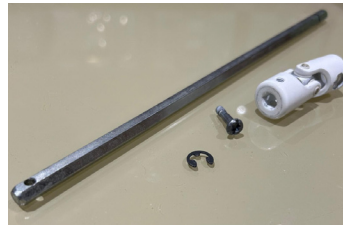


fig.8.1



fig.8.2



fig.9.1



fig.10.1



fig.10.2



fig.10.3



- 11** Lift the other end of the metal handle up to the universal joint then mark the top of the metal tube so it can be inserted into the universal joint by 15mm (**fig.11.1**). Cut the tube down and insert into the universal joint.
- 12** With the tube inserted into the universal joint, use a 5mm drill bit to drill all the way through the hole in the universal joint (**fig.12.1**) then fix the tube in place with the screw supplied (**fig.12.2**).
- 13** On the outside of the garage, mark the wall where the holes need to be drilled for the cover plate. Drill the holes and secure the cover plate (**fig.13.1**). Security screws are recommended but not supplied.
- 14** Remove the plastic cover from the handle (**fig.14.1**) then use the handle to test if the kit is working and apply the correct sticker to show which way to turn the handle to open the door as seen in **fig.13.1**.



fig.11.1



fig.12.1



fig.12.2



fig.13.1

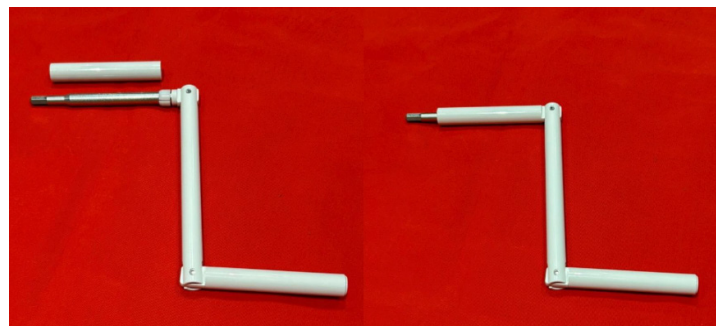


fig.14.1

Rollerdor Ltd
10 & 12 Jarrold Way
Bowthorpe Employment Area
Norwich
Norfolk NR5 9JD

+44 (0)1603 743215
sales@rollerdor.net
www.rollerdor.net

Company Registration Number. 10676267

Registered Office Address:
Rollerdor Ltd, Bankside 300 Peachman Way,
Broadland Business Park, Norwich,
Norfolk, United Kingdom, NR7 0LB

Edition 2024/01

